

2 0 2 3

# ANNUAL REPORT

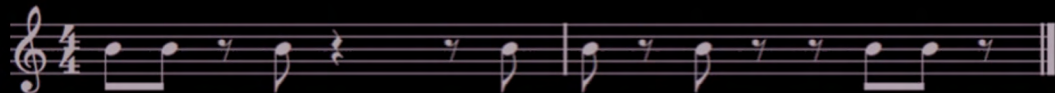
F A C U L T Y O F M E D I C I N E



CONTROL



ARVC



# IN THIS ISSUE

DEAN'S MESSAGE

ADMINISTRATIVE OVERVIEW

DESTINATION EXCELLENCE

ADVANCING HEALTH CARE

RESEARCH AND FUNDING

DONOR RECOGNITION

ALUMNI PRIDE

RISING STARS

EDUCATION

Interested in reading more about a story or update? Visit the [bit.ly](https://bit.ly/MUNMedAR) link or scan the QR code on each page of the annual report. To access a copy of this annual report and past editions, visit <https://bit.ly/MUNMedAR>



## Cover Image

Using a Nobel prize-winning technique, we “reprogrammed” skin cells from patients with the heart disease Arrhythmogenic Right Ventricular Cardiomyopathy (ARVC) into induced pluripotent stem cells (iPSCs). iPSCs have the capacity to become any cell in the body, including heart cells. In this way, we can turn ARVC patient skin cells into heart cells.

The image shows an iPSC-heart cell from an ARVC patient. A musically-trained member of the lab came up with a fast and effective way to characterize our patient heart cells without using expensive or complicated scientific instrumentation. We manually record rhythm notations at the bench with the metronome set to 60. The notations show that these cells exhibit very sporadic contractions, something that is common in ARVC when patients’ hearts become arrhythmic.

~ Dr. Jessica Esseltine, assistant professor of cancer and development, Division of BioMedical Sciences, Faculty of Medicine.





## DEAN'S MESSAGE

Memorial University's *Faculty of Medicine 2022-23 Annual Report* highlights many achievements and advancements in medical education, research and social accountability from April 1, 2022 to March 31, 2023.

This report details how the faculty supports our communities, particularly through education excellence. In September 2022, we received confirmation that our Undergraduate Medical Education program received a full eight-year accreditation status. In 2022, the Faculty of Medicine again received national recognition for our continuing commitment to rural communities with two awards from the Society of Rural Physicians of Canada: the Keith Award and the Rural Medical Education Award. You can read more about these awards [here](#).

As part of our strategic plan, *Destination Excellence*, this past year saw our Internationalization Team develop a strategy for the Faculty of Medicine that aligns with Memorial's internationalization goals. The Equity, Diversity and Inclusion (EDI) Project Team was also created to develop an EDI strategy. It includes a new public speaker series to engage faculty, staff and learners. The Culture of Excellence Team continued its important work overseeing implementation of the unit assessment recommendations and tracking our progress.

We continue to work with the University of Prince Edward Island in developing a joint Doctor of Medicine degree. You can read more about it [here](#).

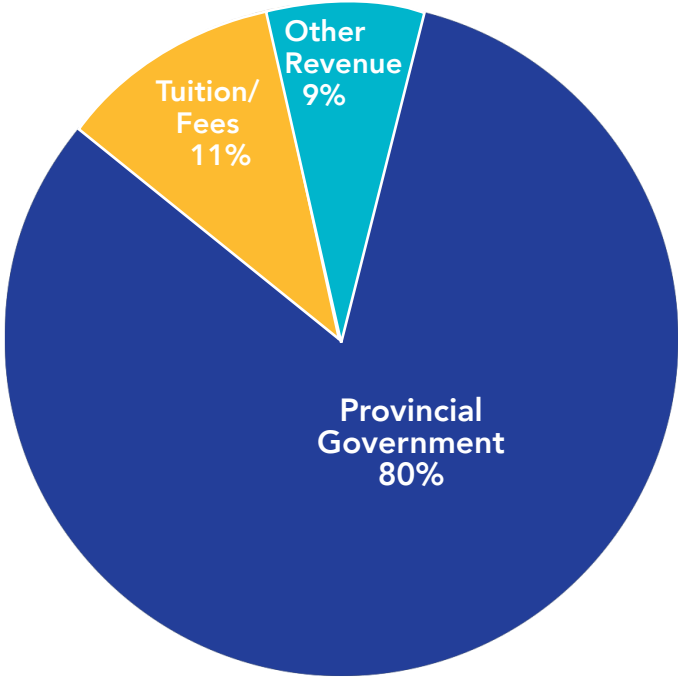
This will be the last annual report under my leadership as I finish my role as Dean of Medicine in August 2023. I would like to thank all our learners, staff, faculty, alumni and friends of the Faculty of Medicine who have helped move us forward towards *Destination Excellence*. It has been an honour and a privilege.

Dr. Margaret Steele  
Dean, Faculty of Medicine  
Professor, Discipline of Psychiatry  
Memorial University of Newfoundland

# ADMINISTRATIVE OVERVIEW

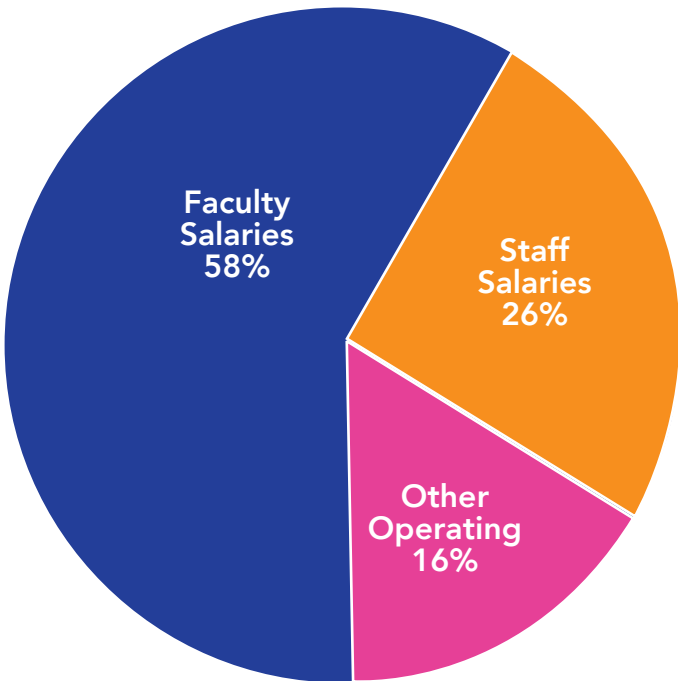
In 2022-23, the Faculty of Medicine earned \$71.2 million in operating revenues, including a \$2.5 million stabilization payment from the Government of Newfoundland and Labrador's Department of Health and Community Services to eliminate the annual operating deficit. As of March 31, 2023, the faculty had an accumulated surplus of \$1.3 million; \$1.1 related to core operations and the remainder related to professional development funds and ancillary operations.

## A BREAKDOWN OF CORE OPERATIONS:



### Other revenue is comprised of:

- External recoveries
- Contract revenue
- Indirect cost of research funding
- Other learner-related revenue
- Other miscellaneous



### Other operating expenses is comprised of:

- Externally contracted services/MOUs
- Utilities
- Library collection
- Operating leases
- Materials and supplies
- Professional fees
- Internal transfers
- Building and equipment repair
- Telecommunications
- Other miscellaneous

## STAFFING, FACULTY AND ADMINISTRATIVE SERVICES

The Faculty of Medicine's employment includes faculty and staff who support our medical education program and research.

MUNFA academic staff members	75
Clinical (non-bargaining)	188
<b>Full-time total</b>	<b>263</b>
Part-time stipendiary	211
Part-time non-stipendiary	1,141
<b>Part-time total</b>	<b>1,352</b>
<b>Non-academic staff</b>	<b>233</b>

**Part-time faculty** primarily provide clinical education experiences for our undergraduate and postgraduate medical education learners. Through their affiliation with the Faculty of Medicine, they are also able to engage in research collaborations, access the library and participate in continuing medical education through the Office of Professional and Educational Development.

**Part-time stipendiary faculty** receive a small annual stipend which can range from \$2,000 to \$12,000 annually to perform a specific set of academic duties.

**Part-time non-stipendiary faculty** receive no regular compensation, but may receive a small payment for serving as a preceptor for a medical learner or for classroom teaching as per the rate of pay approved by the Board of Regents.

**Part-time faculty** are located throughout Newfoundland and Labrador, New Brunswick, Prince Edward Island and Nunavut. In accordance with Committee on Accreditation of Canadian Medical Schools accreditation standards, the medical school is responsible for ensuring that the supervision of medical learners for required clinical learning experiences is provided by faculty members of the medical school.

## STUDENT NUMBERS:

### Undergraduate students – Doctor of Medicine

Class of 2023	77
Class of 2024	80
Class of 2025	80
Class of 2026	79



Graduate students	Diploma	Masters	Doctoral
BioMedical Sciences	0	60	34
Community Health and Humanities and Clinical Epidemiology	14	119	37

### Postgraduate medical education residents:

Anatomical Pathology	7
Anesthesia	18
Care of the Elderly*	1
Care of Underserved Populations*	1
Child and Adolescent Psychiatry**	0
Diagnostic Radiology	19
Emergency Medicine	5
Family Medicine	68
General Internal Medicine	3
General Surgery	23
Geriatric Psychiatry	1
Internal Medicine	40
Medical Oncology	1
Nephrology	1
Neurology	11
Obstetrics and Gynecology	19
Orthopedic Surgery	11
Pediatrics	25
Psychiatry	18
Total Active Residents	272

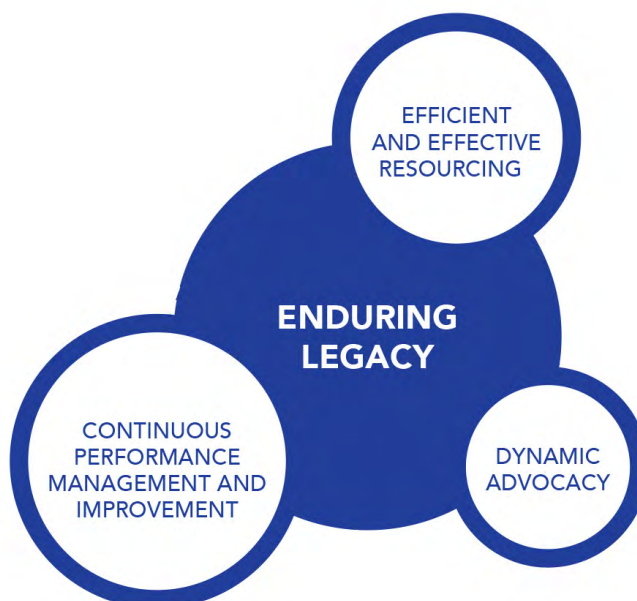
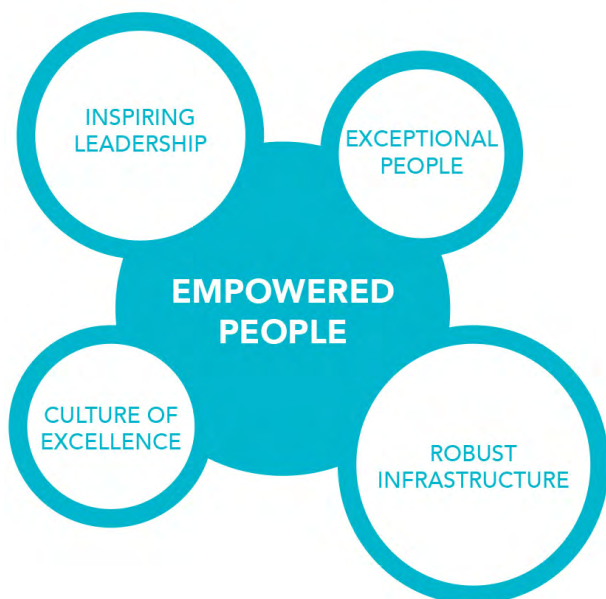
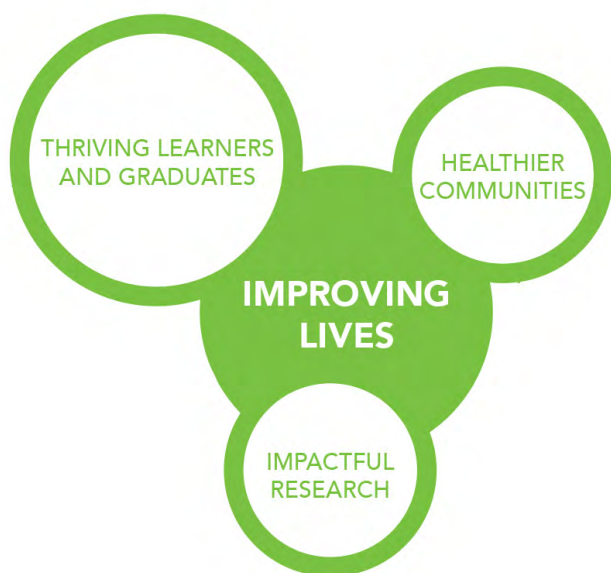
\*Discipline of Family Medicine enhanced skills program

\*\* Discipline of Psychiatry subspecialty program

# DESTINATION EXCELLENCE

Several key activities and initiatives supporting the ongoing implementation of *Destination Excellence*, the Faculty of Medicine's strategic plan, took place in 2022-23.

The annual strategic planning update and planning days were held over two half-days on Nov. 2 and 4, 2022. Dr. Paul Banahane Adjei, interim associate vice-president (Indigenous research) was the keynote speaker. The sessions were held in a hybrid format with approximately 100 participants taking part each day. Feedback from the sessions was positive and future events will continue to be provided using a hybrid format.



## IMPROVING LIVES

- The **HUMAN GENETICS AND GENOMICS INTERIM STEERING COMMITTEE** was created to develop a governance structure appropriate for overseeing the development of an integrated, coordinated and province-wide approach to human genetics and genomics in Newfoundland and Labrador. This past year saw the formation of several working groups to address developing specific areas including data governance, clinical capacity and patient engagement.

## EXCELLENCE IN ALL WE DO

- The new **INTERNATIONALIZATION PROJECT TEAM** was established to develop an internationalization strategy for the Faculty of Medicine that aligns with Memorial's internationalization goals. The project team formed working groups to create an ethical framework to underpin and guide international engagement, develop a checklist for use when considering entering into international partnerships and build strategies to manage graduate international enrolment and enhance the international student experience.

## EMPOWERED PEOPLE

- The **WELLNESS AND WELL-BEING ADVISORY COMMITTEE** was formed to review the recommendations from the inaugural wellness survey report and oversee the introduction of wellness initiatives. The team held a retreat to develop an action plan and are meeting regularly to implement it. To get a sense for the wellness and engagement of faculty and staff in the post-pandemic environment, a short survey was administered early in 2023.
- The **EQUITY, DIVERSITY, AND INCLUSION (EDI) PROJECT TEAM** was created with a mandate to develop an EDI strategy for the Faculty of Medicine and build capacity and understanding related to EDI matters. The EDI speaker series in 2022-23 featured three talks on a diverse range of topics. Speakers this year included: Drs. Salim Razak, Lisa Richardson and OmiSoore Dryden. The EDI team also participated in the Association of American Medical Colleges Diversity, Inclusion, Culture, and Equity Inventory. The team is currently investigating ways to address areas in the inventory where the Faculty of Medicine can improve.
- The **CULTURE OF EXCELLENCE TEAM** continues to oversee implementation of the unit assessment recommendations and track progress using a heat map. The team is developing a sustainability plan to ensure that its work becomes embedded into Faculty of Medicine policies and processes before the team sunsets in the fall of 2023.

## ENDURING LEGACY

- The **BALANCED SCORECARD ADVISORY COMMITTEE** concluded its work after the final set of metrics were defined. Operational responsibility for producing the annual metrics report now rests with the business analyst associated with the Dean's Office.
- A refresh of **DESTINATION EXCELLENCE** (2018-2023) is currently underway!

### Unit Assessment Heat Map - February 2023: ■ Completed ■ In Progress

Medical Learners		Graduate Learners	Faculty Members	Administration and Staff	Memorial University
1	11	19	27	32	38
2	12	20	28	33	39
3	13	21	29	34	
4	14	22	30	35	
5	15	23	31	36	
6	16	24		37	
7	17	25			
8	18	26			
9					
10					



<https://bit.ly/44MEioz>



# ADVANCING HEALTH CARE

## NATIONAL RECOGNITION FOR TRAINING, PRODUCING RURAL DOCTORS

On April 22, the Society of Rural Physicians of Canada (SRPC) honoured Memorial University with three awards.

We received the SRPC's 2022 Keith Award for the second year in a row. The faculty also tied with the Northern Ontario School of Medicine (NOSM) for the Rural Medical Education Award.

The Keith Award is presented to the university with the most family medicine graduates practicing in rural Canada for the most recent 10 years after graduation. We have received this award nine times since it was established in 2000.

The SRPC Rural Medical Education Award recognizes Canadian medical schools encouraging students to pursue rural medicine training. The award is presented annually to the program matching the most graduates to rural family medicine residency. Memorial and NOSM tied with 86 per cent of graduates matching to a rural residency. We also received this award in 2008, 2019 and 2020.

Dr. Robbie McCarthy (B.Sc. Pharmacy'13; MD'19; PGY1 & PGY2 FM'21) was recognized with the Rural Resident Leadership Award. Dr. McCarthy is a family medicine resident completing additional training in emergency medicine at Memorial. His contributions to undergraduate teaching led Dr. Lynette Power (B.Sc.'02; B.Med. Sc.'94; MD'96), an assistant professor with the Discipline of Family Medicine, to nominate him for the leadership award.



<https://bit.ly/3EYSZZx>



## MEDICAL EDUCATION EXCELLENCE

Memorial University's Doctor of Medicine (MD) program continues to demonstrate its success in medical education by receiving a full eight-year accreditation – the longest term possible.

In Canada, all undergraduate medical education programs must receive accreditation from the Committee on Accreditation of Canadian Medical Schools.

The process of undergraduate accreditation is used to ensure that MD programs are delivering high-quality, dynamic and innovative academic programming to medical students while enabling faculty to be exceptional teachers.

The accreditation provides assurances to medical students, graduates, the medical profession, health-care institutions, health authorities, regulatory authorities and the public that educational programs meet reasonable and appropriate national standards for educational quality.

Local leads include Dr. Taryn Hearn (MD'02), associate dean of undergraduate medical education and faculty undergraduate accreditation lead; and Brian Kerr (M.Ed'98), undergraduate medical education curriculum and accreditation advisor.

Typically, the accreditation site visit team conducts two in-person visits. However, because both visits were completely virtual due to the COVID-19 pandemic, it required faculty, staff and learners to be creative and flexible when the accreditors met with many groups of faculty, staff and learners to discuss aspects of the undergraduate program.

While the next accreditation will take place in 2030, Dr. Hearn says it is a continuous process.

***"Medical education is always advancing and evolving," she said. "We recognize the importance of ensuring we are providing the best education our undergraduate medical students can receive here at Memorial University."***



*From left: Dr. Taryn Hearn, Mr. Brian Kerr and Dr. Margaret Steele at the accreditation reception in the Faculty of Medicine.*

*Photo: Jennifer Armstrong, (BA Fine Arts (Visual)'94)*



<https://bit.ly/3NcryRY>



## EXPANSION OF THE FAMILY MEDICINE RESIDENCY PROGRAM

On Aug. 16, 2022, the provincial government announced funding to increase the number of family medicine residency seats at Memorial's Faculty of Medicine.

Prior to the announcement, the Faculty of Medicine offered 80 entry-level residency seats allocated across various training programs; the Discipline of Family Medicine's residency program accounted for 35 of these seats. The

expansion of five, first iteration international medical graduate (IMG) seats will increase the family medicine allocation to 40. Dr. Mikaela Murphy (PGY1, FM'21), an IMG and family medicine resident, was at the announcement. She completed her undergraduate medical education outside of Canada and returned to her home province to complete her residency. She hopes to set up practice in the province one day.



Dr. Mikaela Murphy  
Photo: Rich Blenkinsopp

*"I knew I wanted to return to Newfoundland and Labrador for my residency and my resumé very much reflected that," she said. "Unfortunately, because there are not many IMG seats, I first had to apply to other medical schools in Canada and hope I went unmatched and that a spot went unfilled at Memorial. I was incredibly lucky my gamble paid off, but I know many others who were not as lucky."*

An expansion to the family medicine program will provide an opportunity for more Canadians and Newfoundlanders and Labradorians a chance to consider Memorial for their residency training.



<https://bit.ly/3U7B6yU>

## JOINT DOCTOR OF MEDICINE DEGREE

Memorial University and the University of Prince Edward Island (UPEI) continue to collaborate on the development of the joint Doctor of Medicine degree.

Progress has been made in a number of areas including the construction of the new building at UPEI which will house the medical school. There are numerous committees composed of individuals from Memorial and UPEI which are looking at all aspects required for the development of a medical school. These committees meet regularly and their recommendations go to the steering committee for approval.

Work continues on documentation for accreditation by the Committee on Accreditation of Canadian Medical Schools and approval from the Atlantic Advisory Committee on Health Human Resources and the Maritime Provinces Higher Education Commission.

The first class will start in 2025 with a cohort of 20 students, with one seat reserved for an Indigenous learner. This initial program will start under Memorial's accreditation and then transition to an independent joint program for future cohorts.

An active search for an associate dean at UPEI for the cohort starting under Memorial's accreditation will begin in the fall of 2023. The associate dean will report to the dean of medicine at Memorial.

The curriculum will mirror Memorial's curriculum with the addition of planetary health. Didactic curriculum will be delivered synchronously from either site using information technology. Clinical skills and laboratory experiences for anatomy and physiology teaching will occur at UPEI and community engagement experiences and clinical rotations will take place in P.E.I. whenever possible.



*Concept rendering for the building housing the UPEI Faculty of Medicine.  
Credit: Architects Four*



## LAB SUITE RENOVATIONS ENHANCES LEARNING

Following 18 months of renovations to the anatomy lab suite in the Faculty of Medicine, more varied learning experiences are available, resulting in highly engaged medical learners.

The suite, and its ventilation system, were renovated over three phases in 2020 and 2021.

"The result is a medical education offering more variety in how students learn and engage with anatomy," said Dr. Patricia (Trish) Cousins (B.Sc.'95; PhD'05), the faculty's manager of medical laboratories and the Clinical Learning and Simulation Centre.



*One of the renovated lab spaces in the anatomy lab suite at the Faculty of Medicine, with plastinated organs and body parts.  
Photo: Jennifer Armstrong*

The hands-on learning lab is expected to improve learner retention of anatomical information.

Students' ability to again make wet anatomical specimens complements the hands-on education they receive via the bones and plastic models of the Body Works collection. The collection came to Memorial thanks to Dr. Shakti Chandra, professor *emerita* in the Faculty of Medicine.

Dr. Janna M. Andronowski is an assistant professor of biomedical sciences and the undergraduate medical education anatomy lead of the Body Works samples. She said having wet anatomical specimens available again expands what instructors can do, such as deliver her graduate-level human anatomy course, previously unavailable at Memorial.

With these improvements, anatomy education at Memorial can incorporate different learning techniques and different ways of learning.

Students say the enhancements also help them practice collaboration skills and to appreciate the complexity of the human body and the differences between bodies.



<https://bit.ly/3S5Tje2>

# RESEARCH AND FUNDING

## NATURAL MEDICINE

As the saying goes, a breath of fresh air can work wonders. Health professionals in this province can now formally prescribe nature to their patients as part of personal health-care plans. The [Canadian Association of Physicians for the Environment](#) (CAPE) launched [PaRx](#), a national nature prescription program, in Newfoundland and Labrador in 2022.

Health-care providers who register with PaRx are provided with a nature prescription file to use with patients encouraging them to see the value of time spent in nature. The first of its kind in Canada, PaRx began as an initiative of the B.C. Parks Foundation and is now available in every province.

Dr. Atanu Sarkar, associate professor of environmental and occupational health, Division of Community Health and Humanities, is the founder of [CAPE NL](#) and its current chair. He says the benefits of getting out in nature are enormous and there is plenty of evidence that spending time in nature helps improve health and well-being.

Dr. Jane Gosine is a professor of musicology at the School of Music. She is cross-appointed to the Division of Community Health and Humanities and is a community member with CAPE NL. She became involved because of her interest in [social prescribing](#), an approach to health care that empowers health-care providers to connect patients with community supports and activities to improve health and well-being.



<https://bit.ly/3SHkb4q>

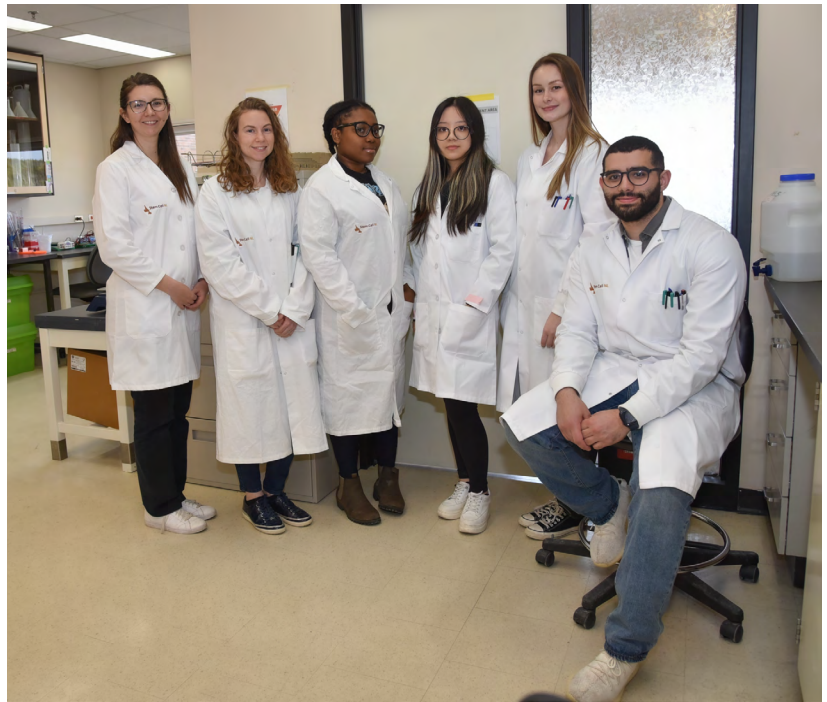
## RESEARCH BOOST

Dr. Jessica Esseltine, assistant professor of cancer and development, Division of BioMedical Sciences, received \$837,676 for the project, Molecular mechanisms underlying inherited Arrhythmogenic Right Ventricular Cardiomyopathy (ARVC) in Newfoundland. The project is one of five teams at Memorial awarded \$1,921,253 in grants from the Canadian Institutes of Health Research.

ARVC is a heart disease where streaks of fat and scar tissue invade the heart muscle, leading to sudden cardiac death and heart failure. Newfoundland and Labrador is home to the largest concentrated population of ARVC patients in the world, caused by a mutation within the TMEM43 gene.

As part of her project, Dr. Esseltine and her collaborators will take skin cells from ARVC patients and reprogram them into induced pluripotent stem cells.

*"Our team has the potential to become a nexus of translational, patient-oriented research focusing on Newfoundland and Labrador families with far-reaching implications for ARVC patients around the globe."*



Dr. Esseltine (left) and her team.  
Photo: Jennifer Armstrong.



<https://bit.ly/3OwZF7I>

## LITHOS – THE MEMORIAL UNIVERSITY MEDICAL JOURNAL

In January, the first edition of *Lithos* launched. This student-run, biannual and peer reviewed publication operates under the guidance of an advisory board within the Faculty of Medicine. As Memorial University's medical journal, it is dedicated to the dissemination of high-quality medical literature.

You can access the first issue of *Lithos* through the [Memorial University journal system](#).



<https://bit.ly/476oChj>

# DONOR RECOGNITION

## SUPPORTING FUTURE PHYSICIANS

The Lyons Family of Avondale-Winchburgh Bursary was created through a generous gift from Dr. Lian Lyons (B.Sc.(Hons.)'83; M.Sc.'87; MD'89). It was established to help students enrolled in their first year of the Doctor of Medicine (MD) program further their education in the medical field and is renewable for up to three additional years; or four years in total. As an alumna of the MD program, Dr. Lyons hopes the deserving recipient and future physician will be in a position to similarly contribute to the medical field and their community at large. *"Eyes forward, chin tucked, fight hard and never ever give up!"* she said.

## FAMILY INSPIRED

The Thomas and Mimi Donovan Public Health Award was established by a generous donation from Dr. Catherine Donovan (B.Med.Sc.'76; MD'78) to honour the memory of her parents. In spite of their own personal and economic challenges, they were committed to advanced education for their children. They were instrumental in supporting Dr. Donovan as she pursued her medical education and came to appreciate the importance of her choosing public health as the focus of her medical career.

It is awarded annually to a full-time graduate student pursuing a Master of Public Health who has demonstrated a significant commitment to public health with a preference to learners who focus on issues related to the natural or built environment, climate change or "One Health."



## GIVING TUESDAY CHAMPION

In 2022, Giving Tuesday fell on Nov. 29 and Memorial University alumni, faculty, staff, learners and community members raised \$157,048. A very special aspect of 2022's Giving Tuesday was Memorial's matching donors, which matched gifts up to \$50,000 with donations to the Thriving Student Fund. Money from the fund goes directly to Memorial students in the form of scholarships, bursaries and awards to increase their access to education and to help students focus on their studies.

One Giving Tuesday champion was Dr. Lee Errett (MD'77), a professor of surgery at the University of Toronto, and a longtime supporter of Memorial University.

When asked why he decided to support Memorial's students on Giving Tuesday, he said since completing his medical degree, he realized just how valuable his time at Memorial was.

*"To this day I have not met teachers any better than some of the people we were lucky to have" he said. "That includes Queen's, Oxford, McGill, Duke, Yale and Toronto."*

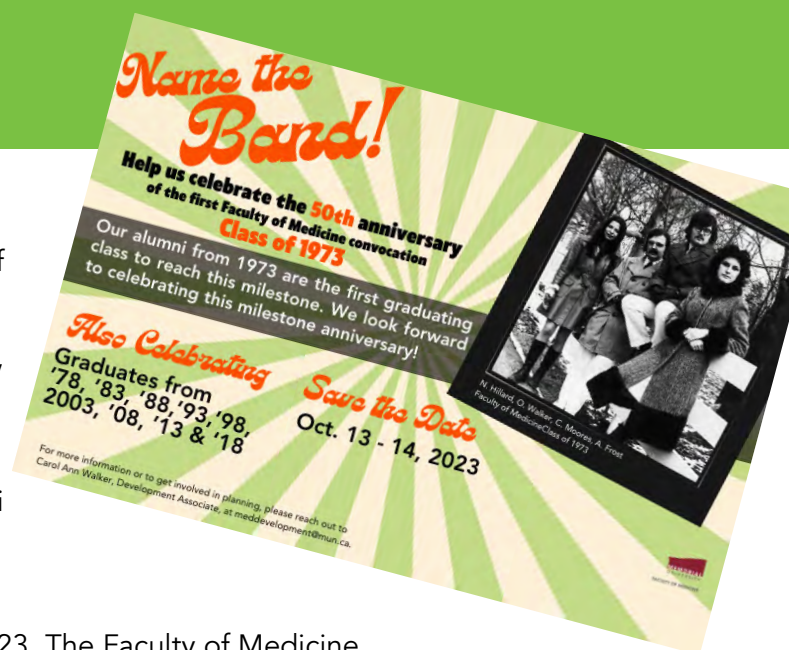
It's because of this foundational experience Dr. Errett decided to give to his alma mater and says it was "time to demonstrate some gratitude." During the Faculty of Medicine's Reunion 2022 in October, he announced his intention to make a donation and encouraged classmates and reunion attendees to consider supporting the university.



# ALUMNI PRIDE

## SAVE THE DATE FOR REUNION 2023!

This year marks the 50th anniversary of the first Doctor of Medicine (MD) cohort to complete their degree. For our 2023 reunion, MD alumni from the classes of 1973, 1978, 1983, 1988, 1993, 1998, 2003, 2008, 2013 and 2018 are invited to join us in St. John's, N.L. to reconnect with classmates and the Faculty of Medicine. However, alumni from any year are also welcome to attend.



Alumni are asked to save the date for October 13-14, 2023. The Faculty of Medicine Development Office and the Office of Professional and Educational Development (OPED) look forward to working with graduates to make this a great reunion.

For more information, or to get involved in planning, please reach out to Carol Ann Walker, development associate, at [meddevelopment@mun.ca](mailto:meddevelopment@mun.ca).

## ALL ROADS LEAD TO MEMORIAL

### Q&A with Alumna of the Year

The Alumni of the Year Award is the highest distinction bestowed on a Memorial graduate by the alumni body. Dr. Lisa Barrett (B.Sc.(Hons.)'98; MD'05; PhD'08) has created a legacy of selflessness through her trailblazing work with infectious disease and was named alumna of the year for 2022.

During the pandemic, Dr. Barrett was center stage as a trusted media spokesperson who contextualized public health policies in Nova Scotia. Working at ground level, she envisioned and developed the frequent community-based, pop-up rapid testing centres in and around Halifax by recruiting volunteers from the community and training them to swab and test for COVID-19.

Dr. Barrett maintains strong ties to Memorial and her home province of Newfoundland and Labrador through her collaboration with researchers on public health and advocacy efforts. She brought her hepatitis C elimination strategy to the province, as well as her COVID-19 work.

To learn more about Dr. Barrett, read a Q&A exclusive published in The Gazette: <https://bit.ly/3eegSTU>



From left: Dr. Margaret Steele and Dr. Lisa Barrett  
Photo: Robert Greeley



<https://bit.ly/3eegSTU>

## TRIO OF ALUMNI RECEIVE ORDER OF NEWFOUNDLAND AND LABRADOR

An investiture ceremony at Government House on Sept. 28, 2022 appointed eight people to the Order of Newfoundland and Labrador – three of whom have connections the Faculty of Medicine.

The Order of Newfoundland and Labrador is the province's highest honour and recognizes individuals who have demonstrated excellence and achievement in any field of endeavour benefiting in an exemplary manner the province and its residents. Appointments to the order are made by the lieutenant-governor of Newfoundland and Labrador as chancellor of the order on the recommendation of the Order of Newfoundland and Labrador Advisory Council.



*Front Row, L-R: Dr. Catherine Donovan, Premier Andrew Furey, Lieutenant Governor Judy M. Foote, Maxwell (Max) Short  
Back Row, L-R: Dr. Proton Rahman, Dr. Janice Fitzgerald, Robert Cormier, Joseph D. Goudie*

*Missing from photo: Carla Emerson Furlong, Alan Thomas Doyle, C.M.  
Photo: Submitted*

### **Dr. Catherine Donovan**

For more than 30 years, Dr. Catherine Donovan (B.Med.Sc.'76; MD'78) helped build the foundation for Public Health in Newfoundland and Labrador. She is a retired professor of public health and former medical officer of health at Eastern Health who worked tirelessly to promote and protect the health of Newfoundlanders and Labradorians.

### **Dr. Janice Fitzgerald**

Dr. Janice Fitzgerald (B.Sc.'90; B.Med.Sc.'92; MD'94; MPH'16) became the chief medical officer of health for Newfoundland and Labrador in September 2019 and continues to hold that position.

Her work was instrumental in the province achieving the highest COVID-19 vaccination rates in the country. Dr. Fitzgerald was notably a leader residents of the province could rely on through hundreds of live COVID-19 briefings, alert system implementations and the navigation of public health measures.

She was also recognized by the Doctor of Medicine class of 2025, who chose her as the honorary white coat recipient for their class – an honour presented to a leader in the medical profession who represents respect, leadership and has had a positive impact on the medical community.

## Dr. Proton Rahman

Dr. Proton Rahman (B.Med.Sc.'88; MD'90) is internationally-renowned in the field of health care and he was the associate dean of clinical research at the Faculty of Medicine from 2011 to 2019. He is also a clinician scientist, professor of medicine and staff rheumatologist. His groundbreaking research and leadership has had a profound impact on patients around the world.

He is well recognized for his translational genetics research and has identified several novel susceptibility genes in psoriasis and psoriatic arthritis, as well as new genetic markers for disease progression and pharmacogenetics in other inflammatory rheumatic diseases.

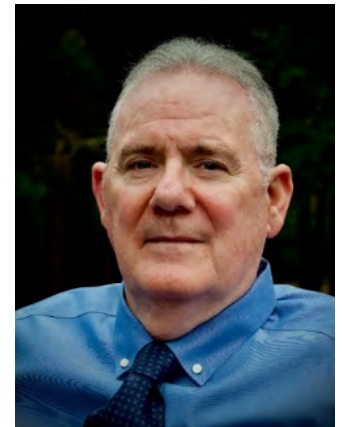
His efforts in leading the COVID-19 Predictive Analysis Team helped shape and guide the province's pandemic response.



<https://bit.ly/3fgnHnY>

## ORDER OF CANADA

In December 2022, Her Excellency the Right Honourable Mary Simon, Governor General of Canada announced new appointments to the Order of Canada. They included Dr. Conor Maguire (B.Med.Sc.'79; MD'81), an associate professor of Radiology, who was recognized for his contributions to nuclear medicine and radiology and for improving health care for patients in Newfoundland and Labrador and Alberta.



*Dr. Conor Maguire  
Photo: Michael Maguire*

## KEEP IN TOUCH



Are you an alumnus interested in staying up-to-date in the latest news from the Faculty of Medicine? Please ensure your contact information is current.

The Development Office publishes a digital alumni newsletter that is sent quarterly by email. It includes updates from the Faculty of Medicine and features alumni profiles, research stories and more.

This email newsletter is available to all alumni and is a great way to stay in touch with the work happening at the Faculty of Medicine. For more information on receiving the newsletter, or to update your alumni information, please email [meddevelopment@mun.ca](mailto:meddevelopment@mun.ca).



# RISING STARS

## ROYAL SOCIETY OF CANADA'S COLLEGE OF NEW SCHOLARS, ARTISTS AND SCIENTISTS

Congratulations to Dr. Sheila Garland, who is among [2022's inductees to the Royal Society of Canada's College of New Scholars, Artists and Scientists](#).

Dr. Garland is an internationally renowned clinical psychologist whose research bridges the areas of psychology, oncology and sleep medicine. She is an associate professor in the Department of Psychology, Faculty of Science, who is cross-appointed to the Discipline of Oncology.



Photo:  
Rich Blenkinsopp



<https://bit.ly/3TNCLJL>

Dr. Garland applies sophisticated quantitative, qualitative and patient-oriented research methods to improve the lives of people impacted by cancer. Her innovative work on the influence poor sleep has on cancer recovery, and the establishment of effective interventions, has improved the nights, and days, of cancer survivors worldwide.

As director of the [Sleep, Health and Wellness Lab](#) at Memorial, Dr. Garland is also developing [an app](#) to help cancer survivors overcome insomnia.

## MEDICAL STUDENT RECOGNIZED BY CANADIAN MEDICAL HALL OF FAME



Aileen Feschuk is the 2022 recipient of the MD Financial Management, Memorial University, Faculty of Medicine Canadian Medical Hall of Fame (CMHF) Award. Ms. Feschuk, a third-year medical student, was inspired by [Dr. Maud Menten](#), who was inducted as a CMHF Laureate in 1998. Dr. Menten was a brilliant researcher and pioneer of women in medicine. Working alongside Dr. Leoner Michaelis, their research advanced the field of biochemistry through their Michaelis-Menten equation; a concept that changed the study of biological reactions.

"I am humbled and honoured to be a recipient of this prestigious award," she said. "I would not be in this position without the incredible support and guidance from mentors, family and friends. I believe this award will help open doors which will allow me to continue to pursue my passion for medical education, research and support of women in medicine, in addition to creating positive innovative change within health care."



## DAVID WINTER EARLY CAREER RESEARCH AWARD

Dr. Diana De Carvalho, an associate professor of clinical epidemiology, received the David Winter Early Career Research Award from the Canadian Society of Biomechanics (CSB) in August 2022. The award was presented during the North American Congress on Biomechanics in Ottawa, Ont.

Presented biennially, this award recognizes work from the latest six years of an awardee's career and their contributions to the field.

Dr. De Carvalho has been an active member of the CSB since 2006 and was fortunate to be in the last cohort of graduate students taught by Dr. David Winter at the University of Waterloo. She graduated with her PhD in 2015, which coincided with her first faculty appointment at Memorial University of Newfoundland.

Dr. De Carvalho has successfully developed a highly productive research program and the first biomechanics laboratory in the Faculty of Medicine. Her research is centered on spine biomechanics, ergonomics and clinical low back pain and she has a particular interest in the effect sustained flexed postures, such as sitting, have on the mechanics of the back.

"Receiving this award was a massive honour for me – both in terms of being recognized by my peers and because it is given in the memory of Dr. David Winter, whom I was very fortunate to learn from as a teacher and mentor during my graduate training," she said. "The achievement is a reflection of the wonderful support I have received from Memorial's Faculty of Medicine and especially of the hard work and dedication of my students."



*From left: Dr. Diana De Carvalho and Dr. Andrew Laing  
Photo: Dr. Jack Callaghan*

## MGSS VOLUNTEER GROUP OF THE YEAR

Congratulations to the Medical Graduate Student Society (MGSS) who were named Volunteer Group of the Year for 2022 by Memorial's Student Volunteer Bureau. The MGSS has helped organize many fundraisers and planned events, including the annual Monte Carlo Charity Gala. They have also advocated for fellow students and continuously shared important information with them.

*From left: Alison MacDonald (MOHS'22, Dip.Clinical Epi'23), Jennifer Bent (B.Sc.'20; B.Sc.(Hons.)'21), Hilary Hennessey (Cert. Crim.'21; BSW'22). Photo submitted.*



## RESIDENT RESEARCH DAY

On Jan. 30, 2023, the Faculty of Medicine hosted the second annual Resident Research Symposium. Hosted in person and virtually, it was an opportunity for Memorial's postgraduate residents to present and discuss their clinical research.

[Dr. Michael Strong](#), president of the Canadian Institutes of Health Research, visited the Faculty of Medicine in person and provided a keynote address for the symposium. His presentation, *The Road Ahead: The Changing Landscape of Health Research in Canada*, provided an opportunity to discuss how research has evolved in recent years.



*From left are Dr. Margaret Steele, Dr. Kayleigh Maxwell, Dr. Garrett Tingley, Dr. Adam Comerford, Dr. Rebecca Quilty, Dr. Laurie Twells and Dr. Michael Strong  
Photo: Jennifer Armstrong*

"Research and scholarship in academic medicine is a continuum that will lead to better quality health care," said Dr. Margaret Steele, dean of Medicine. "Being able to hear directly from a key Canadian leader in clinical research, like Dr. Strong, is a significant opportunity for our postgraduate residents and elevates the importance of research that is addressing patient needs."

The faculty recognized four residents' research as part of the symposium.

Dr. Adam Comerford's (B.Sc.'11; MPH'12; MD'18; PGY1 Ob/Gyn'21) research project was a retrospective cohort study looking at the maternal and neonatal outcomes of methadone use during pregnancy, while Dr. Kayleigh Maxwell (B.Sc.(Hons.)'16; MD'20; PGY1 Internal Med'21) looked at the rate of ischemic heart disease in Newfoundland and Labrador, one of the highest rates in Canada.

Dr. Garrett Tingley (B.Sc.(Hons.)'16; MD'20; PGY1 Anesthesia'21) evaluated the impacts of a Department of Anesthesia initiative on length of stay and pain scores after cervical spine surgery and Dr. Rebecca Quilty (B.Sc. (Hons.)'15; MD'19; PGY1 Pediatrics'21) investigated Lyme disease, an infection spread to humans by the black-legged tick.



<https://bit.ly/3KjxLtq>

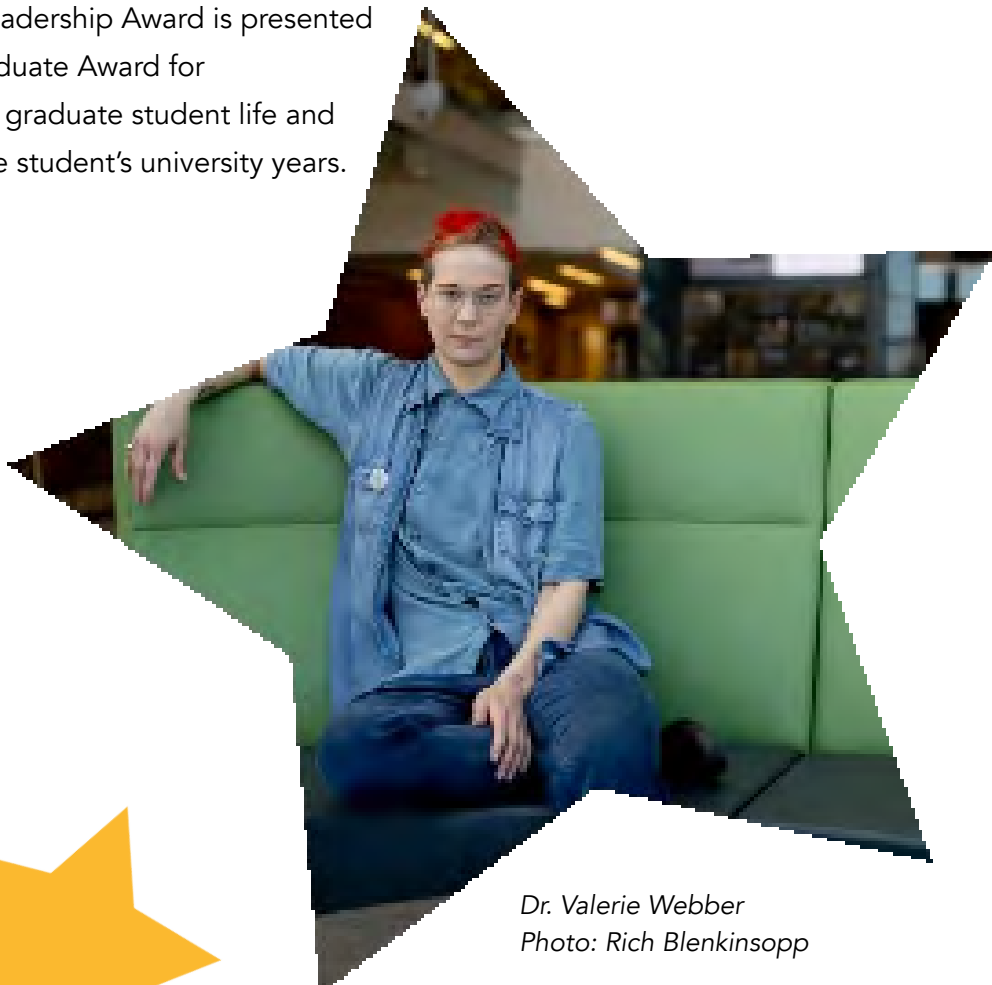
## SEEING OPPORTUNITIES AND PROVIDING LEADERSHIP

Supportive mentorship and diverse scholarship opportunities attracted Dr. Valerie Webber to Memorial for graduate studies. Dr. Webber collected a PhD in medicine (community health and humanities) on June 1, 2022 during spring convocation ceremonies.

In addition to completing their studies, Dr. Webber was the recipient of The Chancellor's Graduate Award and The Fry Family Foundation Graduate Leadership Award for Spring 2022 convocation.

The Chancellor's Graduate Award is the most prestigious leadership recognition award by Memorial University to recognize outstanding leadership contributions to graduate student life and other areas of the community during the student's university years.

The Fry Family Foundation Graduate Leadership Award is presented to the recipient of The Chancellor's Graduate Award for outstanding leadership contributions to graduate student life and other areas of the community during the student's university years.



*Dr. Valerie Webber  
Photo: Rich Blenkinsopp*



## DEAN'S EXCELLENCE AWARDS

On June 7, 2022 the Faculty of Medicine hosted the Dean's Excellence Awards for 2021. These awards provide an opportunity to reflect on and celebrate the achievements and success of our faculty and staff. They are awarded every two years. The extra special celebration included the 2019 recipients, whose event was postponed due to public health restrictions at the time.

### 2019 awardees

- Dr. Michelle Ploughman (M.Sc.'03; PhD'07) - Junior Faculty Award – Clinical
- Dr. Chris Kovacs - Senior Faculty Award – Clinical
- Dr. Matthew Parsons (B.Sc.(Hons.)'04; M.Sc.'06; PhD'11) - Junior Faculty Award – Non-Clinical
- Dr. Michiru Hirasawa - Junior Teaching Award
- Dr. Ann Dorward - Senior Teaching Award
- Dr. Kara Laing (B.Med.Sc.'91; MD'93) - Max House Teaching Award for Continuing Medical Education/ Continuing Professional Development (CME/CPD)
- Ms. Jacinta Reddigan (B.Sc.(Hons.)'09) - Service Award – Managerial
- Ms. Janet Bartlett (BA(Hons.)'12; M.Sc.'15) - Service Award – Administrative
- Ms. Corinne Mercer (B.Sc.'95) - Service Award – Technical

### 2021 awardees

- Mr. Daniel Rubin - Community Member Health Champion Award
- Ms. Angela Dunn (B.Sc.(Hons.)'03; M.Sc.'07) - Service Award – Managerial
- Ms. Caitlin Power - Service Award – Administrative
- Dr. Jill Barter (B.Med.Sc.'87; MD'89) - Senior Teaching Award
- Dr. Shabnam Asghari - Max House Teaching Award for CME/CPD
- Dr. Touati Benoukraf - Junior Faculty Award – Non-Clinical
- Dr. Qi Yuan (PhD'03) - Senior Faculty Award – Non-Clinical
- Dr. Joan Crane (B.Med.Sc.'87; MD'89) - Senior Faculty Award – Clinical



Photo: Jennifer Armstrong



# EDUCATION

## DOCTOR OF MEDICINE ADMISSIONS

The Admissions Office continues to facilitate virtual applicant assessments, which began during the COVID-19 pandemic and will continue to ensure equitable access and reduce the risk of interruptions due to poor weather or other unexpected circumstances. The 2022-2023 admissions cycle used virtual assessments, with virtual interactions to preserve a personal feel.

The diverse admissions committee also meets virtually to deliberate and holistically rank candidates and indices have been created to help recognize applicants from rural and remote areas, as well as those from various socioeconomic groups, to ensure representation from our diverse provincial population. As national standards evolve, the admissions office continues to participate in the Association of Faculties of Medicine of Canada Admissions Network to ensure our tools remain equitable and allow us to contextualize candidates' accomplishments.

## UNDERGRADUATE MEDICAL EDUCATION (UGME)

The UGME team is responsible for the delivery of the Doctor of Medicine (MD) program at Memorial University, meeting regularly with the office of the Dean and the Medical Student Society to keep abreast of current topics and events as they relate to undergraduate medical education.

As mentioned in the [Advancing Health Care section](#), in September 2022, the Committee on Accreditation of Canadian Medical Schools (CACMS) approved the continued accreditation for Memorial University's Undergraduate Medical Education Program for the maximum term of eight years. As part of continued compliance with CACMS accreditation standards, and in the spirit of continuous quality improvement, the MD program is currently undergoing a curriculum review, with a focus on Phase 4 (i.e. the final two clinical learning years).

[Dr. Jasbir Gill \(MD'00\)](#), associate professor, Discipline of Psychiatry, has taken over the role as faculty undergraduate accreditation lead from Dr. Taryn Hearn (MD'02). Dr. Gill has extensive leadership experience in undergraduate medical education and will be leading us through our next accreditation cycle, with a CACMS follow up report due in 2024 and a formative interim review scheduled for 2026.

## OFFICE OF LEARNER WELL-BEING AND SUCCESS (LWS)

LWS continues to promote and support well-being and resiliency for undergraduate and postgraduate learners through their medical education. Committees meet regularly to discuss ways to develop and promote initiatives and share resources to help create a culture of well-being. LWS offers a career advising and planning program that begins with Phase 1 learners. The first two phases of the program incorporate activities and events that occur during pre-clerkship (Phases 1-3). The last two phases of the program provide resources during clerkship (Phase 4). Starting with the Class of 2026, a new process was implemented, matching each learner with a director from LWS for a one-on-one meeting. This relationship will continue through the learner's four years of the MD program and should better prepare them for the Canadian Resident Matching Service – the residency matching service and an important next step in a student's medical professional career. Being well prepared will help learners navigate this process with the skills they need to successfully match to a postgraduate residency program.

Dr Greg Radu (BGY5; Medicine'09) and Dr. Teri Stuckless (B.Sc.Hons.'99; MD'03) worked in collaboration with Dr. Vernon Curran (BA'92), Ann Hollett, Karla Simmons (BA'05; MA'13) and Atena Goudarzi from the Office of Professional and Educational Development, as well as Dr. Sohaib Al-Asaad (PGY3; Medicine'09), Postgraduate Medical Education, on a research project funded by Workplace NL. The research resulted in a report on the experiences of postgraduate trainees relating to their well-being during the COVID-19 pandemic. This study was conducted from December 2021 to February 2023 and the report is posted on the Workplace NL website.

## POSTGRADUATE MEDICAL EDUCATION (PGME)

The strength and dedication of our people, including staff, program directors and program administrators, continues to be a highlight and strength of Memorial's PGME community.

In addition to their role as frontline health-care workers, learners worked together to ensure appropriate distribution of work commensurate with their level of expertise.

PGME is continuing a full review of existing policies and developing new ones as required. They are also paying attention to quality improvement education, revamping the academic half-day curriculum and continuing to grow program evaluation initiatives.

Additional successes:

- The diagnostic radiology training program implemented Competence By Design effective July 1, 2022. This means all programs in the Faculty of Medicine at Memorial University have now switched to Competency Based Medical Education (CBME).
- The appointment of many new faculty leads and directors to systemically enhance quality improvement efforts including:
  - Dr. Sonia Sampson (PGY5 Anesthesia'10), faculty lead, accreditation
  - Dr. Kirsty Tompkins (B.Med.Sc.'90; MD'92), faculty lead, CBME
  - Dr. Angus Hartery (B.Sc.'01; MD'05; PGY5 Radiology'10), interim faculty lead, program evaluation
  - Dr. Lisa Kenny (B.Ed.'04; B.Sp.Ed.'05; M.Ed.'09), educational director, critical care
  - Dr. Kathryn Sparrow (MD'10; PGY5 Anesthesia'14), educational director, Quality Assessment/Quality Improvement
  - Dr. Melanie Seal (B.Sc.(Hons.)'99; MD'03; Dip. Clinical Epi'05; PGY3 Internal Med'05), educational director, assessment and education
- The annual exit survey for learners completing their training was revamped for continued QI.
- PGME was successful in obtaining MCP coverage for out-of-province learners, something we have been striving for years to achieve.
- The PGME Advisory Council was created to provide different perspectives and input on high level matters facing PGME.
- PGME has conducted 13 internal and two external accreditation reviews.
- Filled 85 postgraduate positions with 54 per cent Memorial University graduates, 31 per cent Canadian medical graduates and 15 per cent international medical graduates.

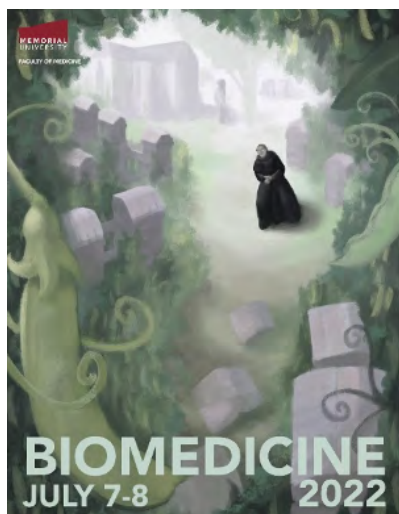
- PGME has also filled 13 sub-specialty positions in various programs.
- PGME and the Discipline of Family Medicine spearheaded the introduction of an international medical graduate family medicine stream for 2023. This government sponsored initiative guarantees five dedicated two-year family medicine seats at the Faculty of Medicine with a five-year return of service commitment to the province.
- Staff were involved in various Memorial specialty committees including: wellness; scholarship; equity, diversity and inclusion; strategic planning; and internalization; as well as several national committees.

## RESEARCH AND GRADUATE STUDIES (RGS)

This academic year, 60 graduates of Faculty of Medicine programs received their graduate degrees at the Spring 2022, Fall 2022 and Winter 2023 (in absentia) convocations.

The Faculty of Medicine is pleased to host 16 postdoctoral fellows under the supervision of 11 faculty supervisors. Postdoctoral fellows are developing scholars who greatly enrich the learning and training environment in the Faculty of Medicine.

Graduate program milestones were met for doctoral students with 10 PhD comprehensive exams completed throughout the year.



Two graduate research symposia – The 8th annual Division of BioMedical Sciences BioMedicine 2022 Research Symposium (July 7-8, 2022) and the inaugural Division of Community Health and Humanities (CHH) Graduate Research Day (May 24, 2023) – were hosted this year, featuring research from undergraduate learners, graduate learners and postdoctoral fellows. The guest speaker for the CHH Graduate Research Day was Dr. Roy West, professor *emeritus*, School of Pharmacy, Memorial University. For the BioMedicine Symposium, guest speakers included Dr. Lara Boyd from the University of British Columbia and Dr. Linda Chelico from the University of Saskatchewan. The 2022 BioMedicine symposium also celebrated the 200th anniversary of the birth of Gregor Mendel with a thematic artwork competition. The winning submission, by graduate student Aaron Curtis (BA(Hons.)'14; B.Sc.'14; M.Sc.'23), was featured as the cover art for the program.

Graduate student travel to national and international conferences and workshops resumed following the pandemic hiatus. The Canadian Student Health Research Forum (CSHRF), hosted by the University of Manitoba, also returned to an in-person format for the last national gathering of Canada's top trainees in health research in Winnipeg under the CSHRF umbrella.

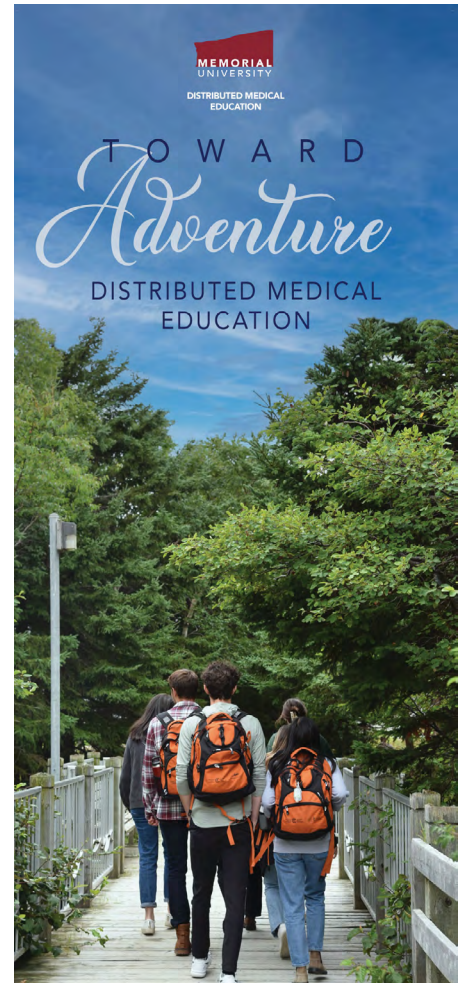
In 2023, the national forum for health research trainees will convert to the International Congress on Academic Medicine, sponsored by the Association of Faculties of Medicine in Canada.



## DISTRIBUTED MEDICAL EDUCATION (DME)

The Faculty of Medicine at Memorial University has continued to demonstrate leadership in rural medical education over the past year. Much of its success is owed to the innovative work and dedication of the Office of Distributed Medical Education (DME). DME has helped maintain the robust delivery of medical education at rural, remote and under-serviced sites across Newfoundland and Labrador, Prince Edward Island, New Brunswick and Nunavut through creative and rewarding learning and teaching experiences for faculty, staff, learners, patients and communities.

Having experienced unprecedented threats to health and well-being through a global pandemic, DME developed a strategic resource plan to address social accountability through distributed faculty recruitment, retention and recognition, known as The Triple R Approach. By enhancing communication and networking with Memorial's partners, DME led the Rural Physician Recruitment and Retention Committee with the implementation of several strategies that were successful in enhancing faculty participation and learner satisfaction in medical education. Of notable mention are the:



- Increase in faculty remuneration to achieve national parity
- Distribution of faculty appointment certificates
- Opportunities for enhanced faculty connectivity through site visits, town halls and discussion groups
- Expansion of the Family Medicine Lecture Series
- Fostering of learner well-being through the updated Housing Policy to include pet-friendly accommodations
- Dissemination of Memorial's work on national stages to extend reach and cultivate networking opportunities
- A new marketing campaign themed "Toward Adventure" and improvement of DME's website and newsletter to increase appeal for distributed education
- Completion of instructional videos and photo shoots to help streamline faculty appointment processes and onboarding and to clarify expectations for educators.

Memorial continues to build on its rural educational success and, as mentioned previously, was once again recognized nationally by the Society of Rural Physicians Canada as the recipient of both the Keith Award and the Rural Education Award. DME was instrumental in the attainment of these achievements.

## OFFICE OF PROFESSIONAL AND EDUCATIONAL DEVELOPMENT (OPED)

[The Medical Education Research Fund](#) is a new funding opportunity within OPED for scholarly projects in medical education. Medical education research aims to advance the knowledge, skills and professionalism of medical students and educators by evaluating, understanding and innovating educational practice. The dean of Medicine, Dr. Margaret Steele, has contributed \$30,000 to support this initiative. Funding up to a maximum of \$10,000 per project is available. The 2022 awardees included Dr. Lynn Power (B.Sc.'92; B.Med.Sc.'94; MD'96), Dr. Natalie Beausoliel and Dr. Julia Trahey (B.Med.Sc.'84; MD'86).

In September 2022, OPED launched the [Advanced Physician Management Leadership Program \(APMLP\)](#) which builds on the conceptual foundation provided in the award winning [Physician Management Leadership Program](#). It offers advanced leaders a more thorough exploration of several leadership topics. The APMLP modules are co-facilitated by a content expert and a physician to ensure the learning reflects the provincial health care context.

In 2022, OPED also launched the Family Medicine Lecture Series delivered in partnership between the Long Range, Shalloway, RE-Boot and Endeavor Family Practice Networks, the Family Practice Renewal Program, the provincial health authority and Distributed Medical Education, Faculty of Medicine. This weekly lecture series focuses on topics relevant to family medicine and is planned on a monthly basis.

The OPED [Practice Ready Assessment - NL Program](#) is a 12-week clinical field assessment during which a candidate is placed on the education register and is assessed for readiness for family medicine practice under a provisional medical license in Newfoundland and Labrador. During the current reporting period, eight candidates completed the assessment and are now practicing family medicine in the province, with an additional 12 candidates completing it in June 2023.

[The Meridith Marks Mentorship Award](#) recognizes an individual who excels in the mentorship of those involved in medical education scholarship and innovation. The latest recipient is Dr. Rachel Ellaway, professor of medical education in Community Health Sciences, Cumming School of Medicine at the University of Calgary.





Medicine







Faculty of Medicine

[MUN.CA/MEDICINE](http://MUN.CA/MEDICINE)